



AUTOMATIC PACKAGING MACHINE MOD. N-V510

TECHNICAL DETAILS	
Product:	WOOD PELLET- DIAM. 6-8 MM. 
Density:	0,65 - 0,72 KG/LT
Bags Weight:	15 KG -
Shape:	GUSSETED TYPE 
Plastic Film:	POLYETHYLENE STARTING FROM FLAT BOBBIN FILM
Capacity:	Up to 7/10 BAGS/MIN
Parts in contact:	STAINLESS STEEL AISI 304
Weigher:	WITH LOAD CELLS
Management:	MICROPROCESSOR (CPU) WITH VISUALIZATION BY LCD DISPLAY



ELECTRIC VOLTAGE	VOLT 380 AUX. 24 Volt HZ 50 3 PHASE + NEUTRAL+ EARTH
ELECTRIC POWER	8 kW
WORKING PRESSURE	6 bar
AIR-PRESSURE CONSUMPTION	600 liter/min.
ASPIRATION FOR DE-DUCTING	15 m ³ /min.
ELECTRIC COMPONENTS	SIEMENS (Contactors + Magnetothermis)
ELECTRIC PROTECTION GRADE	IP 54
ELECTRIC DRIVE MOTOR	SIEMENS
CONTROL PLC	SIEMENS S7-1200
GEAR-BOX	MTV
PNEUMATIC COMPONENTS	SMC (Pneumatic cylinders + Electroventil + Filter-Group)
PLANT COLOUR	GREY RAL 7035
PAINTURE CYCLE	EPOXY POLYURETHEN for HUMAN FEED

PICTURE OF A SIMILAR MACHINE:





GENERAL TECHNICAL SPECIFICATIONS

Environment	Normal industrial. Non corrosive. No exposure to wind, rain, etc. No explosion hazard.
Working ambient temperature	0°/+40°
Power supply voltage	±10% of the datum specified on the contract
Frequency	±3% of the datum specified on the contract
Compressed Air	6 bars ±10%
Motors & Gear-motors	SIEMENS
Electric system	SIEMENS
PLC	SIEMENS
Control Panel	SIEMENS
Proximity switches	OMRON
Photocells	OMRON – WENGLOR
Inverters	OMRON
Encoders	LIKA
Cylinders and electrovalves	SMC
Lubrication	Grease gear reduction units, oil worm reduction units, grease rolling bearings, oil AC adjusting unit
Standards	CE, compliant to European Specification 2006/42 CE and complying with the following recommendations: UNI EN-ISO 12100-1, UNI EN-ISO 12100-2 EN 418; EN 60204/1; EN 349
Electric motors protection standard	IP 54
Electrical protection standard	IP 54
Noise Level	Less than 75 dB
Nameplates	CE compliant
Documentation	In English. CD support, including: <ul style="list-style-type: none">- Electric diagram- Electric connections- Power and compressed air consumption- Use and maintenance manual



VERTICAL PACKAGING MACHINE

Pos.	Code	Description	Q.ty
10	V5S	VERTICAL PACKAGING MACHINE MOD. N-V5/10 S Max bag size: 500xH.1000 mm. - strip max size: 1050 mm. HOT BAR welding version, suitable for the production of bi-sealing plastic film bags (polyethylene), starting from individual flat sheet reel.	1,00

INCLUDED ACCESSORIES

Pos.	Code	Description	Q.ty
20	VMA40	FORMING TUBE FOR 15 KG	1,00
30	A310	WEIGHER MOD. ALPHA 3/10 electronic weigher with 1 single heads, 1 belts for gross and for finishing weight	1,00
40	VA20	PHOTOELECTRIC CELL for the centring of the film by optical contrast	1,00
50	VA83	MODIFIABLE BAG SUPPORT PLATE AND PNEUMATIC COMPACTOR	1,00
60	VB10	MODEM FOR TELE-ASSISTANCE	1,00
70	VMAT	INSPECTION STRUCTURE equipped with railing and access stair	1,00
80	VA33	PNEUMATIC DEVICE FOR PRODUCING GUSSETS	1,00
90	NU60	FINISHED PACKAGE CONVEYOR BELT coated steel structure 3000x600 MM.	1,00



TECHNICAL DESCRIPTION

No. 01 VERTICAL PACKAGING MACHINE MOD. N-V5/10 SPECIAL

Hot bar welding version, suitable for the production of bi-sealing plastic film bags (polyethylene), starting from individual flat sheet reel.

The machine essentially consists of the following elements:

1. Steel work supporting structure (type Fe 37) 3 mm. thickness
2. Main movement of highly reliable pneumatic type.
3. Parts in contact with the product, nuts and bolts made of AISI 304 stainless steel.
4. *Parts painted with epoxy paint: according to the following cycle: de-greasing treatment with solvents or hot water at 120°, drying, crack filling using a sealant or polyester filler, filler sanding, application of epoxy base coating of 60 micron, application of two coats of polyurethane based painted with shiny bi-component RAL 7035 with a 70 micron thick finish, drying or oven baking at 60°*
5. Other parts chemically chromed
6. Reel-carrier device, with manually adjustable carriage independent from the machine, assembled on bearings.
7. Motorized reel-unwired set controlled by inductive sensor (Siemens proximity) connected to the machine PLC.
8. Internal film passage unit with chromed steel rollers for regular reel unwinding.
9. Pneumatic-movement longitudinal sealing bar separated from the machine cycle and directly controlled from the operator's panel.
10. Transversal welding bars with independent pneumatic movement with lever elements capable of ensuring maximum reliability and force thanks to the horizontal positioning of the levers (infinite power) in a closed gripper position.
11. Encoder (Hohner) to determine the bag length.
12. The cutting blade positioned on the transversal jaws, is easily replaceable for maintenance purposes.
13. Welding check on each single jaw in order to ensure the perfect sealing potential of the bag, while keeping the temperature constantly even.
14. Temperature display on each individual sealing bar directly at the front of the electric panel.
15. Weld cooling with jets of air a to speed up the melted film solidification process.
16. Film pulling belts of LINATEX 300H200 type, near the forming tube.

Nova Pellet

Arco International S.r.l. – Machinery and Plant for Pellet Production
Via Brescia, 56 – 25026 PONTEVICO (BS) - Tel. (030) 9307670 – Fax (030) 9307961
E-Mail: commerciale@novapellet.it - www.novapellet.it



17. Pneumatic panel complete with solenoid valves.
18. Cabinet type electric control panel (integrated inside the machine) complete with controlling SIEMENS PLC that monitors the various functions and programmes set.
19. Touch-screen operator interface display for the display and diagnostics of functional anomalies. Keyboard of Siemens TP177 –colour type for work parameter planning or modification. (2 MB memory, no battery required, interface option for internet assistance with profinet IO output)
20. device for the rapid joining of the film designed to aid and accelerate manual joining of the film, during the phase of bobbin change, end bobbin sensor included.

TECHNICAL FEATURES:

- Max bag size : 500xH.1000 mm.
 - Strip max size : 1050 mm.
 - Max volume : 50 Lt.
-
- (vma40) **No. 01 FORMING TUBE for 15 kg**
made of stainless steel which can be easily removed for cleaning or format change.



(a310) No. 01 WEIGHING MACHINE mod. ALPHA 3/10:

The dosage machine in a simple and duty design, is realised in a structure of steel section (frame in carbon steel type Fe 37 – thickness 3 mm.) that have been treated with food-grade epoxy. It is built with high quality components for easy and low maintenance for continuous operation 24 hours/day, 365 days/year under tough industrial working conditions.



Description:

The product is fed onto the weighing machine and maintained at a constant level by the level detector, as it passes into the loading chute from which it is then passed along a belt for the gross weighing.



Finally the product is then fed into a bin connected to the loading cell responsible for determining the weight by way of a microprocessor that possesses the following characteristics:

- Alpha-numerical weight display;
- Electronic card SIWAREX U connected with the main PLC machine.
- Programming and input of weight, by digital keyboard;
- Programmable automatic taring;
- Automatic control of product in flow;
- Memorization of optimal data of cycle;
- Guarantee against any package being underweight;

Weighing unit specification:

- Vertically adjustable leveling device for maximum production rate.
- High efficiency product level detectors to control product accumulation in the hopper and to prevent partially filled bags
- Heavy duty pneumatic clutch-brake designed to provide heatless high frequency start-stop sequences
- Control integrated into the automatic bagger control panel to allow optimum efficiency.
- Adjustable hopper filing time to allow optimization of the feeding system according to production rate.
- Scraper under the belt conveyor for a clean and virtually dust-free operation.
- Polished stainless steel AISI 304 walls to prevent bridging or sticking in the hopper.
- Dust Collecting Ports (located at the top and the front of the feeder)
- Watertight construction suitable for running aggressive products.
- Stainless steel loading cells (HBM) protected by a stainless box against crashes

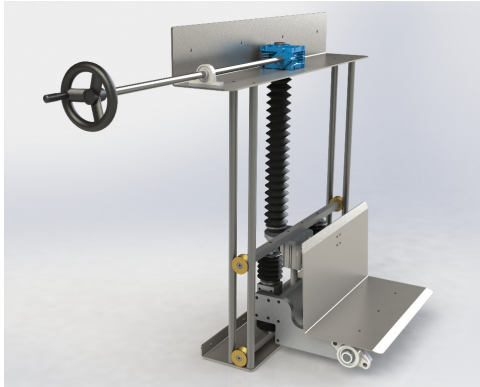
Technical data:

- Dry air work temperature : -10° +40° C
- Electrical supply : 380 Volt 50 Hz
- Power absorbed at full load : 1/1.5 kw
- Pressure the air compressed : 5/7 bar
- Parts in contact with product : st. st. AISI 304

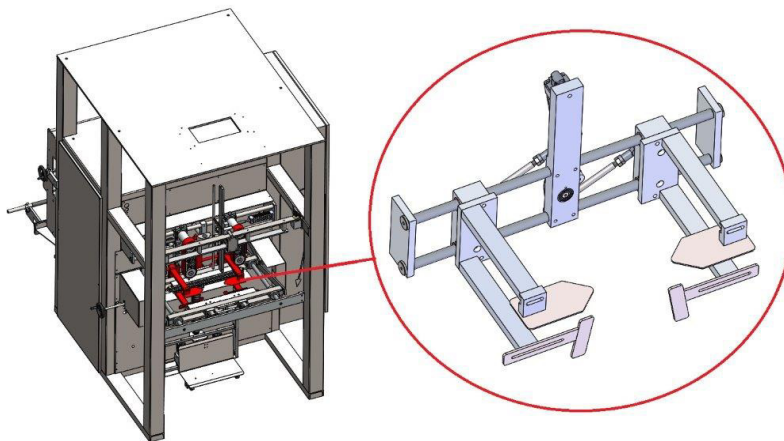
- (va20) **No.01 PHOTOELECTRIC CELL**
for the centring of the film by optical contrast.



- (va83) **No. 01 MODIFIABLE BAG SUPPORT PLATE+PNEUMATIC COMPACTOR** designed to:
 - support heavy bags
 - compact difficult products inside the packages



- (vmaT) **No. 01 INSPECTION STRUCTURE** equipped with treading, railing and access stairs, realised in coated steel (according to CE standards).
- (va33) **No. 01 PNEUMATIC DEVICE FOR PRODUCING GUSSETS** Designed to produce packaging gussetings, the device possesses nozzle and mechanical action.



- (nu60) **No. 01 FINISHED PACKAGE CONVEYOR BELT** Possessing coated steel structure, independent motorization and a length of 3000x610mm.



**NOVA PELLET
SALES OFFICE**

Nova Pellet
Arco International S.r.l. – Machinery and Plant for Pellet Production
Via Brescia, 56 – 25026 PONTEVICO (BS) - Tel. (030) 9307670 – Fax (030) 9307961
E-Mail: commerciale@novapellet.it - www.novapellet.it